



**TLM  
2019**

**Annual  
Report**

# Table of Contents

<b>INTRODUCTION .....</b>	<b>4</b>
<b>SELEMANI'S STORY .....</b>	<b>5</b>
<b>BOARD CHAIR &amp; CEO MESSAGE .....</b>	<b>6</b>
<b>OUR OPERATIONS.....</b>	<b>9</b>
<b><i>Clinical Work .....</i></b>	<b>10</b>
Intensive Care units (ICUs) .....	11
Chemotherapy .....	11
SAFE Chemotherapy .....	12
Database "Janey" .....	12
<b><i>National Framework of Collaborative Paediatric Oncology Centres .....</i></b>	<b>14</b>
<b><i>Education &amp; Training .....</i></b>	<b>15</b>
Doctors & Nursing Training.....	15
Laboratory Services Training .....	15
Parents & Caregivers' Training.....	16
Visiting Experts .....	17
Awards .....	17
SIOP 2019.....	17
<b><i>Non-Clinical Support.....</i></b>	<b>18</b>
Therapy Programmes.....	19
The skills & School Programmes .....	19
Nutrition Programme .....	19
Transport Programmes .....	19
Therapy Programmes .....	19
<b><i>Harnessing Social Media: Fundraising &amp; Childhood Cancer Awareness .....</i></b>	<b>20</b>
Tumaini La Maisha Festival 2 .....	20
Galway Summer Ball .....	21
Piggy Bank Campaign.....	21
<b><i>Professional Development for Staff.....</i></b>	<b>21</b>
<b>FUNDRAISING &amp; INCOME .....</b>	<b>23</b>
<b><i>Income sources for the year 2019.....</i></b>	<b>23</b>
<b><i>Efficiency Indicators .....</i></b>	<b>24</b>
<b><i>Support Service Indicator .....</i></b>	<b>24</b>
<b><i>Statement of Financial Position 2019 .....</i></b>	<b>26</b>
<b>2019 IN NUMBERS .....</b>	<b>27</b>
<b><i>New Paediatric cancer cases seen .....</i></b>	<b>28</b>
<b>PARTNERS &amp; FRIENDS .....</b>	<b>35</b>
<b>TLM ENGINE .....</b>	<b>36</b>
<b>DIAGRAMS.....</b>	<b>14</b>
<b><i>Diagram 1: TLM network &amp; Coverage.....</i></b>	<b>14</b>
<b><i>Diagram 2: Income growth over the years.....</i></b>	<b>23</b>
<b><i>Diagram 3: Efficiency Indicators over the years in Millions .....</i></b>	<b>24</b>
<b><i>Diagram 4: Income &amp; Expenses.....</i></b>	<b>24</b>
<b><i>Diagram 5: Statement of Financial Position.....</i></b>	<b>26</b>
<b><i>Diagram 6: New cases over the years 2013-2019.....</i></b>	<b>28</b>
<b><i>Diagram 7: New cases seen at partner centers .....</i></b>	<b>28</b>
<b><i>Diagram 8: New cases by sex distribution .....</i></b>	<b>29</b>

Diagram 9: Existing centers by region over the years 2017-2019 .....	30
Diagram 10: New cases by cancer diagnosis type over the years .....	31
Diagram 11: New cancer cases by treatment outcome .....	32
Diagram 12: Outreach centers by patient numbers .....	32
Diagram 13: New Cancer cases by diagnosis type .....	33
Diagram 14: New Cancer Cases seen over the years by zones and Location.....	34

## Introduction

Tumaini La Maisha means ‘hope for life’ and was the obvious choice of name for the organisation that began in Ocean Road all those years ago. We have fought every day for the lives of children with cancer. Essential medicines, equipment, adequate staff numbers, hospital services and beds were all in short supply in 2011 when TLM began. Hope for life however, was in abundant supply in the spirit of the children, the eyes of their parents and the smiles and the absolute dedication of Dr. Jane and her small staff.

Today, the organization is supported by its sister NGOs Their Lives Matter Ireland and Their Lives Matter UK, and our partners IMA World Health in the USA. We have grown exponentially in staff size and scope of work. Hope for life is still and will remain, central to everything we do, now more than ever. We hope that this annual report gives you an idea of the heart and soul of organisation and why we do, what we do – the children. 2019 proved to be our biggest year in many ways; number of children treated, number of partner centres, capital builds, staff scope and expenditure. We are confident that you will see value for the time, money and efforts invested in each project in the report that follows. We thank you from the bottom of our hearts for showing through your compassion, support and encouragement that you too, believe that Their Lives Matter!

We are heading into 2020 with 11 partner centres across 7 regions and a team as dedicated as ever to expand and improve childhood cancer services for every child in Tanzania. Join us along the way - Together we can!

## Selemani's Story



Selemani was diagnosed with Acute Lymphoblastic Leukemia (B Cell), the most common type of cancer in children. It affects certain cells in the immune system, called B cells and T cells.

Tumaini La Maisha was there from the very beginning to support the child and his family.

When Selemani first came to the hospital he was very sad, solemn, frightened and always crying. He wanted to go home - he was missing home and his siblings. His Aunt who came with him could not rest or sleep during the time due to the psychological and physical state

he was in. It was a very scary and stressful time for them both and the family they left behind.

He was just 8 years when he was diagnosed with this cancer. He first came to Muhimbili National Hospital in September 2019 with recurrent fevers and joint and bone pains he had been experiencing for the past 4 months.

He was also having repeated bleeding under the skin. This was due to blood cancer affecting his normal cells. It became even worse when he had any injections for blood checks and treatment when lots of blood would gush out as his blood would not clot. His poor little body was covered with red dot-like bruises all over.

Tumaini La Maisha was there all along with the child and family trying to ease his suffering and cure his disease.

Immediately after Selemani and his Aunt arrived at the hospital, and his intensive treatment began, he was also connected to our family liaison officer for orientation, advice and support

during their hospital stay. He was introduced to the psychosocial team, which he found to be incredibly therapeutic.

The family was given a welcome pack and parent's handbook. The family attended various events arranged by TLM including weekly outings to social events, sports grounds and going to the beach. Family counselling was also arranged for Selemani and his aunt.

The good news is that Selemani improved tremendously. His disease is in full remission. All the bruising has disappeared. He has become a lively and active boy in the ward, participating in all social activities taking place and we would always find him the centre of attention with the other kids with a big smile on his face.

We have high hopes that he will complete his treatment and never be bothered by cancer again.

## **Board Chair Message**

*Friends,*

*On behalf of the children, families, staff, volunteers and my fellow founders and board members across the We Are TLM network; thank you. 2019 was a year of continued success, expansion, awareness and promise.*

*We treated more children than previous years, and continue to see increases in survival rates and the numbers of children presenting for treatment to our partner centres. We also successfully opened two ICU units in Muhimbili Hospital, secured clean and safe drinking water for the whole paediatric block and continued to develop our EMRS Janey and SAFE chemo app. All in all, it was a year of hard work paying off and proof that to go far, we must go together.*

*I am delighted to report that continued education and training are on-going for clinical and non-clinical staff such as through the nurse training course and lab services training, our partnerships and collaborations continue to grow in strength and our social programmes are continuously an important part of the care we provide to children, families and staff alike.*

*We were delighted to be represented at SIOP 2019 and to have received the prize for best oral presentation for our SAFE CHEMO App presentation. We also welcomed a number of visiting experts and university collaborators.*

*We also had a lively year with fundraising and awareness campaigns and successfully ran our first Piggy Bank campaign that we hope to institutionalise as an annual programme through which we engage with schools and the community in Dar es Salaam.*

*I am also delighted to congratulate my colleague and fellow founding board member Dr Trish on receiving the Kathleen Lynn Medal for excellence in paediatrics from the Royal College of Physicians of Ireland. It truly was a year to remember.*

*With every year that comes and goes, we grow closer to our goal of reaching every child in need in Tanzania, but yet we have a long way to go.*

*These children are our biggest motivation and source of solace. We will not stop until we are providing the lifesaving cancer services that they need, for free and closer to their homes so that they can start treatment as soon as symptoms present.*

*Join us by following our work, volunteering your time or expertise, sharing our story or consider becoming a monthly donor. We are proud to publish all financial statements on our website and in reports such as this, as we pride ourselves on achieving the most possible within our means.*

*We urge you to continue supporting us and the children; Their Lives Matter!*

**Gerald Mongella**





### CEO Message

It is my great pleasure to bring you our latest annual report.

Each year since we began this journey we have managed to make further positive progress. 2019 was no exception in this regard though it was a remarkable year.

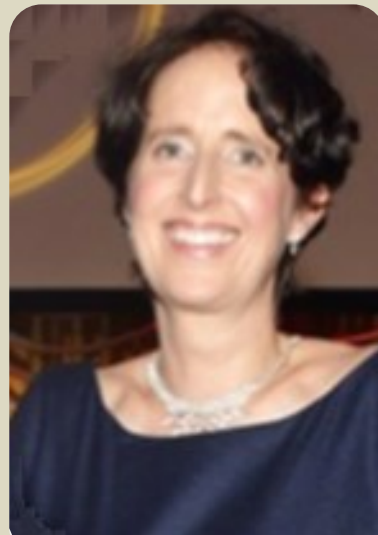
We treated more children than ever before. We extended our National Children's Cancer Network to a new site. We officially opened our 2 Intensive care units. We ran many training programmes helping over 100 colleagues develop professionally. And we made further great progress in our Apps for Africa plans (creating our electronic Medical Record system EMRS and our excel based automated chemotherapy prescribing sheets).

Most importantly of all we supported more children in more ways than ever through their cancer journey and back to their normal lives and bright future.

Thank you all so much for your incredible support which is the only reason we can help every single child we serve.

Love from Dr Trish

Tumaini La Maisha – together we can!



Every donated **Money** is treated with  
consideration and respect.  
It has helped us **support** children  
with cancer and their families across  
Tanzania.



*Thank You*  
*We couldn't do it without You*





# OUR OPERATIONS



*Just like our little friends, we are forever  
aiming higher and further than before*

*Although we have made significant progress in both the numbers and survival rates of children treated this year; we have aimed further and come up with new strategies and higher goals to ensure we accomplish our mission that all children living in Tanzania who develop*

*cancer, have appropriate access to quality services leading to cure rates seen in resource-rich settings. This year we finalized our latest 5-year strategic plan for **2021-2025 – building a path to complete children's cancer care for all.***



## CLINICAL WORK



### Intensive Care Units (ICUs)

This year we successfully handed over two ICUs to MNH that we constructed and equipped. The neonatal and Paediatric Intensive care units (NICU and PICU) opened and have been in operation since March this year, under the management of MNH.

Construction of the project started in the year 2018, and sought to overcome the challenge of caring for children with paediatric and neonatal intensive care needs at the hospital. The oncology service required these departments support more than most specialists. Children with cancer had previously been admitted to an adult ICU or indeed many were unable to access care as these adult services are vastly over stretched.

During the opening ceremony, we welcomed various representatives and guests who played a role in these ICUs coming to be, they included Dr Sawsan Al Madhi, director General for Friends of Cancer Patients (UAE charity and sponsor of the programme) and representing Her highness the Queen of Sharja; Mr Adrian Fitzgerald development specialist for health at the Irish Embassy in Dar es Salaam; the chairperson (Dr Charles Majinge) and representatives of the MNH board and management and the chairperson (Mr Gerald Mongella) and representatives of the TLM Board and management.

Similarly, we completed and handed over a clean and safe water plant to MNH, this plant caters to the whole paediatric complex at the hospital which sees over 400 children and hosts more than 100 staff every day. A massive thanks to the Big Heart Foundation, Friends of Cancer Patients and HRH the Queen of Sharjah for supporting these projects (and special thanks to the Embassy of Ireland for their support of the water plant project).

## Chemotherapy



Chemo drugs worth TZS 642,345,993/- (approximately 279,281.00 USD) were administered and a total of 732 patient children from MNH and our partner center across the country benefitted from the drugs in 2019.

This year MNH opened an Adult Cancer Unit and we proudly supported them with adult cancer drugs when available from our donors. In addition we gave the adult pharmacist team access to our biological safety cabinet for constituting adult chemotherapy drugs, until and when they have their own.

Protective equipment for pharmacists and nurses working at the Paediatric oncology ward reconstituting, handling and administering chemotherapy were purchased and provided by TLM.

## SAFE Chemotherapy

One of TLM's key innovation projects is the SAFE Chemo HACPP App. We believe this programme will transform the delivery of protocol-based treatments in resource-limited settings across SSA from a potentially dangerous and laborious task requiring intensive specialist involvement to a highly automated and safe process.

An excel based prototype of the App has been in use at the Paediatric Oncology Wards at MNH for more than 1 year now. It has reduced prescription errors by more than 90%. In the past, all chemotherapy prescriptions were handwritten with all protocol decisions, calculations, modifications, and the prescribing being the doctor's responsibility. These decisions are complex and error-prone with significant (sometimes life-threatening) consequences to the children as well as being time-consuming.

All existing chemotherapy prescribing programmes assume senior specialist doctors are present in sufficient numbers at treatment centres. They are also incredibly expensive and designed only for use with European and North American protocols.

This programme has the potential to change the way children's (and adults) cancer services are delivered across the

resource limited world; we plan to offer these programmes to our partner centres and our resource-limited colleagues across the continent.

The automated chemotherapy prescriptions software received a prize as best oral presentation at SIOP Africa 2019.

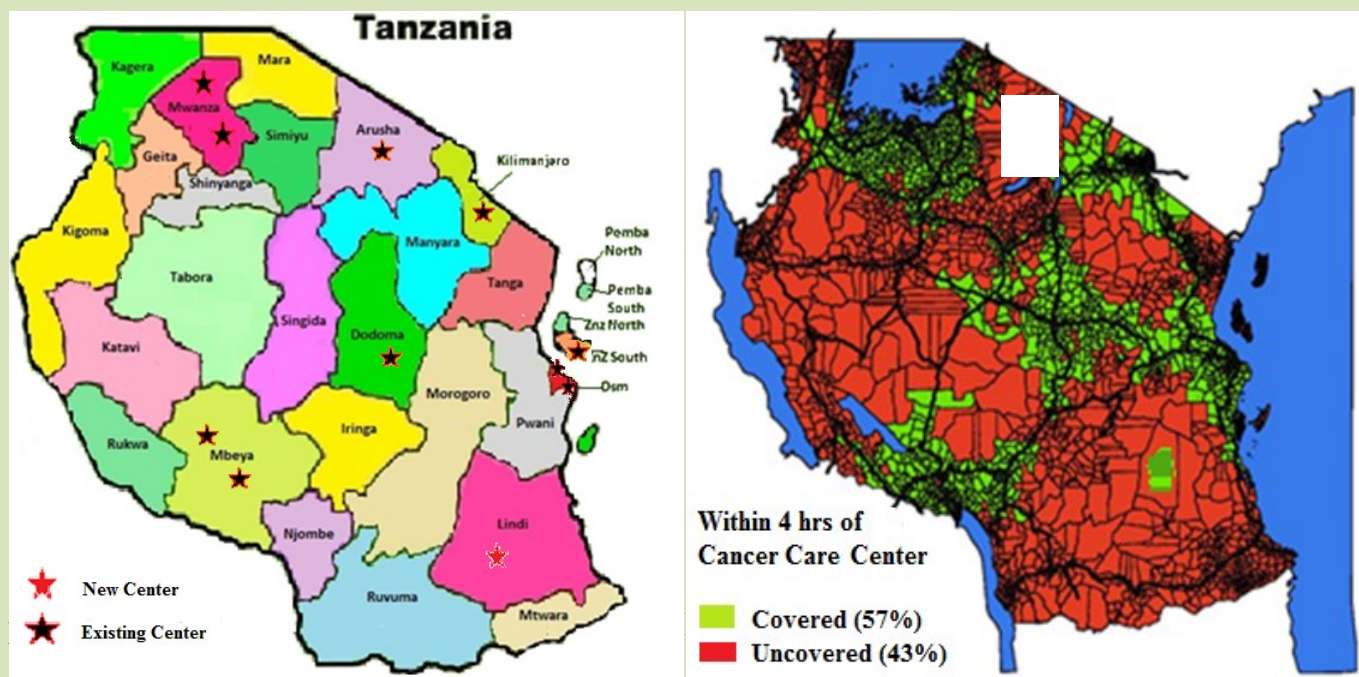
## Electronic Medical Record for Paediatric oncology: TLM's "Janey" Programme.

To have a reliable, accurate nationwide hospital data source, and to understand the impact of our efforts and identify areas of urgent Paediatric Oncology needs, our Paediatric Oncology Electronic Medical Record system (EMRS) is continuing to be designed. Its' design has taken into account the data needs and format of the Government Cancer Registries (CANREG5).

The availability of EMRS for Paediatric Oncology Nationwide will be an invaluable tool in caring for our children, identifying areas requiring strengthening, the design and implementation of our targeted childhood cancer awareness campaigns, the procurement of appropriate supplies of drugs and consumables per region and the ongoing and future expansion of our support and services. It will also assist all necessary reporting for the team and for donors alike.







**Diagram 1: TLM Network & Coverage**

### **National Framework of Collaborative Paediatric Oncology Centres**

Over the coming five to ten years, we plan to expand our National Network of Collaborative paediatric oncology treatment sites to 34 centres so that every child has access to timely, free and curative cancer care. It is hoped that this network will enable us to reach the estimated 4,500 children annually who will develop cancer in Tanzania. Our goal is that no child with cancer should be more than a 4 hour journey from a network site.

We currently have a total of 11 centres including the hub at Muhimbili National Hospital. These centres are Dodoma University Hospital, Mbeya Regional Hospital, Baylor Group in Mbeya, Mnazi Mmoja Hospital in Zanzibar, KCMC Hospital in

Moshi, Bugando Medical Center in Mwanza, ORCI in Dar es Salaam, Arusha Medical center, Sengerema hospitals in Mwanza and Lindi Regional Hospital. (See Map 1).

January to December 2019 a total of 726 new cases, with 244 of these children treated at a collaborating site and the remainder at our MNH wards. See diagram Diagram 6 & 7.

To date we have been able to cover 57% of the country with a 4 hour journey from home to collaborating network site. (see Diagram 1).

To strengthen the services offered at the partners' centres, TLM and MNH clinical staff continued with our weekly structured phone calls and WhatsApp group calls to discuss each active patient at

different centres. In this way the team at Muhimbili National Hospital is aware of every child with cancer undergoing treatment on a week to week basis.

Additionally TLM provides all the chemotherapy required to treat every child at these outreach sites and any transport needs – for child, diagnostic specimens and sending the chemotherapy.

MNH has agreed to help with the pathology reviews and our partners in CHI Crumlin in Dublin continue to assist us enormously with pathology and haematology services.

Throughout the year we have had various training courses for medical staff from these different centres. These are outlined in the following section.



## EDUCATION & TRAINING

### Doctors & Nursing Training



Another area of focus this year as we expand is on specialist training in all areas of paediatric oncology care and increasing public awareness on childhood cancer. Already in place is our 10 weeks Certificate course for Paediatric Oncology Nurse Training and our multiple regular training short courses.



We had our second successful Paediatric Oncology nurse-training course this year. Seven MNH nurses attended a programme, which involved International and local faculty as some of the graduates from the 2018 were invited to participate as educators this year.

A 2nd cohort of partner site trainees were invited to participate in our 4 weeks training on Paediatric Oncology at Muhimbili National Hospital. A total of 17

specialist Doctors facilitated our outreach training this year.



This year we trained additional medical staff from our new centre Benjamin Mkapa in Dodoma, 2 Nurses and 2 Doctors and 1 pharmacist. The training was conducted by experts from Muhimbili National Hospital.

A team of 11 specialists in paediatric Emergency Life support skills visited and conducted a short course training of the trainers (ToTs) for one week at MNH.

### Laboratory Services Training

This year we targeted local capacity building and strengthening diagnostic testing to reduce the number of biopsy samples that are sent Children's Health Ireland Crumlin Hospital and other hospitals abroad for testing.

We conducted 1-week training for 18 Haematology Scientists, 12 from MNH and 6 from three of our partner sites across the country on basic FACS and flow cytometry training at Muhimbili Hospital. In the year 2018, it was only done at the Hub Muhimbili National Hospital thus this year 2019 we wanted to expand this to other partner centres across the country by setting up basic flow testing by using the FACS CALIBER

machines that are available at the centres as part of the previous PEPFAR HIV services. On one of our sites – KCMC have begun Flow Cytometry testing. We are hoping that more sites will follow suit in the coming year.

The sending of the samples abroad and within the Country between our partner centers has largely been possible and successful by our long term partners and friends at DHL who have been providing their services and transporting the samples free of charge for more than 10 years now.

We continued collaborating with the Irish Microbiology Services and MNH to consolidate and strengthen the diagnostic services at MNH for the identification of infectious pathogens. Two paediatric microbiology scientists from Ireland visited Muhimbili Hospital for 1 week to train and collaborate with the local laboratory team at MNH.

1 Pathology scientist & 1 Pathologist attended a one-month training in Kenya.

2 radiation specialists with a special interest in paediatric radiotherapy were provided a one-month placement at St. Lukes' Radiation hospital in Ireland. These specialist doctors returned to continue their care of the children requiring radiotherapy at MNH/ORCI.

At Muhimbili National Hospital, we had the Chief pathology Scientist from CHI in Crumlin conduct 1-week training to four

pathology Lab Scientists working at Muhimbili National Hospital.

Following the above training, one of the MNH specialist pathology scientists conducted a capacity building visit for the pathology team at one of our collaborative centres; Bugando Medical Centre. He provided a one-week training to 4 Lab Scientists at Bugando Hospital. Similar training was done at Sengerema Hospital with 2 Lab technologist.

### Parents & Caregivers' Training



Ongoing awareness activities and basic health training were done during the period. Training topics included essential information regarding each individual child's condition, malaria prevention and management and dental hygiene to parents/ caregivers and Early warning signs of childhood cancer so that once the families return home they can act as cancer ambassadors.



Access to the national children's insurance programme continued to be facilitated with TLM supporting the provision of a total of 125 children with cancer with health insurance coverage. The support included all fees and guiding the families through the process from applying for birth certificates to receiving the health insurance cards.

The trickle-down effect on the family as parents now know the importance of having health insurance coverage for the other siblings as well, is positive and noteworthy.

Also the malaria prevention and management training for parents/caregivers was conducted every week, and the parents and caregivers were given the parent's handbook manual which details what to expect once a child is diagnosed with cancer and starts treatment at the hospital.

These healthcare awareness trainings and education courses for the parents/caregivers have made a remarkable difference. All the parents/caregiver feel positive about their children's treatment

and are well informed on how to protect them from various infections such as dental infections and Malaria.

Training for the children on childhood cancer in a child-centered way has brought about a greater improvement on how the children view and accept the whole course of treatment. It has to a greater extent reduced children's fear of the treatment which reduces the intensity of the pain and facilitates the healing process.



Targeted awareness and child cancer trainings for parents of children undergoing treatment have helped in encouraging parents to complete the full cycle of their child's treatment, as they are involved from the beginning.

Childhood cancer awareness has historically been low in the region and therefore the majority of those who present do so late, or with advanced disease.

Success in the area of childhood cancer awareness activities resulting in health seeking behaviors and our highest number yet of children completing treatment is a significant pillar of our work in the year 2019.

### Visiting Experts



This year we also had several visiting experts come to support what we do here at our headquarters in MNH. These visits impacted positively the care and partnership we can offer to our network of centres. The first comprised of a specialist team for a children's eye cancer Retinoblastoma – surgeons, and oncologists joined us.

We also had our annual visiting paediatric oncology surgeons, and the Irish Paediatric Life Support team. Other specialists supported the training for NICU nurses, our annual Oncology nurses course, and the Haematology and microbiology Laboratory team.



We started collaborating with University College Dublin (UCD) department of Molecular Hematology Department. A combined research project to analyse genetic mutations in

samples from Tanzanian children with Leukemia is proposed.

We are very excited about this future collaboration. It will bring groundbreaking findings that will further enhance the treatment of childhood leukemia to Tanzania children. We were delighted to welcome our friend Dr Peter McCarthy when he visited MNH to formally begin this collaboration. We hope he will be spending lots of his time over the next few years in Tanzania helping with Leukemia genetics research between MNH and UCD.

### Awards:



Dr Trish received the prestigious 2019, Kathleen Lynn Medal, for excellence in pediatrics from the Royal College of Physicians of Ireland. She received this award in recognition of her tireless work in Paediatric Oncology and with TLM.

### SIOP 2019

In the SIOP Africa 2019 Conference conducted in Cairo, 9 Tanzanian delegates representing Tanzanian Children's Cancer efforts: Dr Siwilis outlined the incidence of soft tissue sarcomas among children on the paediatric oncology Ward at MNH. Dr Sarah discussed Wilms tumours. Dr. Jane Kaijage presented on the impact of nutrition to children with cancer. Mr. Obadia presented a poster

outlining one of our many custom designed training courses. Mr Jeremy presented the recent innovative work TLM has been developing; an excel based automated chemotherapy prescribing platform for which he won the 'Best Oral Presentation' of the conference and was invited to attend the World SIOP conference later in the year in Lyon, France.



In October, 8 members of the Tanzanian Paediatric Oncology team members attended the world SIOP conference in Lyon, France. All had submitted abstracts and all were given the opportunity to present.

One Paediatric oncology team member attended an educational conference in Japan .



## NON-CLINICAL SUPPORT

### *Therapy Programmes*



As usual our supportive care programme has taken care of children, parents and our wonderful staff.

During the Paediatric Oncology nurse-training course, participants were taught the importance of clowning and clown doctors in the health care environment. It adds to the emotional support for the child, playfulness, kindness and compassion in the nurse's daily routine while taking care of the cancer patients to reduce the child's fear and anxiety while on treatment.

Therapy sessions were also conducted for the parents and guardians; there were yoga classes twice a week and group counselling which is done in collaboration with Muhimbili University Hospital (MUHAS) students and their professors.

Professional counsellors were on hand to volunteer their time. They were also given a surprise makeover for the mothers and personal grooming for the fathers, which proved to be a very enjoyable experience for the parents, caregivers and children. These sessions were done at the Paediatric oncology wards and at the TLM hostel, Ujasiri House / House of the Brave.



### Therapy Programmes



Children's play-therapy and child-life sessions were strengthened this year. We had several visits to and from our friends at Nafasi Art Space and even made a wonderful video to the song 'Don't give up on me' By Andy Grammar filmed by BM Visuals and Elvis Mulokozi. The video can be seen [here](https://www.youtube.com/watch?v=LDrT8qLeb0&t=64s) <https://www.youtube.com/watch?v=LDrT8qLeb0&t=64s>.

### The Skills & School Programmes

The parents are provided with a safe and special environment for them to best cope with the challenges of caring for a child on treatment for cancer at the hospital.



They were also taught new skills, which can support them in their everyday life as well as generate income, improve their

and their child's health as well as hygiene and nutrition.



This year the parents and caregivers continued making beautiful clothing designs, bags, and jewelry that were sold at our beautiful store at Ujasiri Market, as well as at TLM festival, the Artisan Market and TZ Pop Up shops.

All the profits go to the parents themselves. The handcrafts and beautiful cloth designs made by the parents have enabled them to be invited to several functions to showcase their designs and work.



The children at the oncology wards and hostel are supported to continue with their education (according to their education level and wellbeing) by our two

qualified primary teachers, two play-therapists and 2 clown-doctors.



Our two primary teachers were given an outstanding award by the government municipal council for the good performance outcome of the work they do for the children at the paediatric cancer ward. We have had more than 5 children admitted at the hospital who did not know how to read and write, who, by the time they were discharged from the hospital, could read and write the basics.

### Nutritional Programme



Families often have to spend extended periods at the hospital while their child is receiving treatment.

The hospitalized child and parents or caregiver receive meals from the hospital. However due to the impact of chemotherapy the children tend to lose appetite for their meals. TLM began a supplemental feeding programme for these children. We make 120L of fresh smoothie every day. As a



result the children's weight gain/maintenance has significantly improved, which has led to higher tolerance of chemotherapy treatment and recovery. The nutritious smoothies are given to the kids twice a day and also they are given nutritious porridge every day.



### **Harnessing Social Media: Fundraising & Childhood cancer awareness**

Using our social media platforms we strengthened our fundraising activities and raised awareness of childhood cancer.

We took advantage of all social media platforms such as FB, Instagram, Twitter amongst others by posting awareness posts on childhood cancer and where we are on our plans and implementation. We reached more than 2,000 followers this year 2019.

We had various awareness videos, published through our social media. We engaged with various local and international media, such as TVs, Radio's, and newspapers and newsletters by conducting interviews. All

these platforms helped us in reaching out to the general public and potential donors.

One of our survivors Fatima (with her son Kareem) participated in a cancer awareness talk on cancer at KPMG Dar es Salaam.



We are always amazed at the lengths our supporters go to in support of our mission to provide free and curative cancer treatment to every child in Tanzania.

Our friend Jean-Michel however, has given this phrase new meaning! His most recent race was the Lavaredo Ultra Trail in which he ran 120km - with a twisted ankle! In the year 2019, he had selected to run the New York Marathon and the Ecotrail in Wicklow among a total of 5 ultra events. The most amazing part, however, is that Jean-Michel runs every race in aid of TLM. By the end of 2019, he had run 668.2km, not including all the training and practice runs he manages to fit in! His raised a total amount of 740 Euro.



Another notable mentioned are the pupils and staff of Colaiste Chraobh Abhann. Who had a "No Uniform Day" in Co Wicklow and the money raised from the initiative went to saving kids lives in Tanzania!!!



Also our amazing and lovely friend Kelly Hoon (Chinery) - who's run the Kili Marathon 2019 all in the aim of raising funds for the treatment of children with cancer for TLM.



### ***Tumaini La Maisha Festival***

TLM Festival 2- Our second Annual Tumaini La Maisha Festival took place at Nafasi Art Space in Dar es Salaam on Saturday 31st August 2019. The Festival aimed to raise funds and awareness about childhood cancer and the free treatment



offered for all children in Tanzania through Tumaini La Maisha.

We partnered with Nafasi Art Space throughout the year and during the festival. We are incredibly grateful to them for the joy, childhood spirit and fun they have injected into our amazing psycho-social programme.

### ***Galway Summer Ball***

The fourth Annual Galway Summer Ball and the second Kilruddery TLM Ball in 2019 brings together friends, old and new,



many of whom have made the journey to Tanzania to volunteer or work with us. We appreciate

all of the wonderful people who attended and continue to support us whether by donating raffle prizes or through music and dance!

### ***Piggy Bank Campaign***



Our first Piggy Bank Campaign was launched in September 2019 which is part of our Childhood Cancer Awareness Month Campaign. We received support from individuals, businesses and schools who took in the piggy banks boxes for a whole month to raise funds for children on treatment for cancer in Tanzania. It was very

successful and we believe future campaigns will be even better.

### ***Professional Development for Staff***

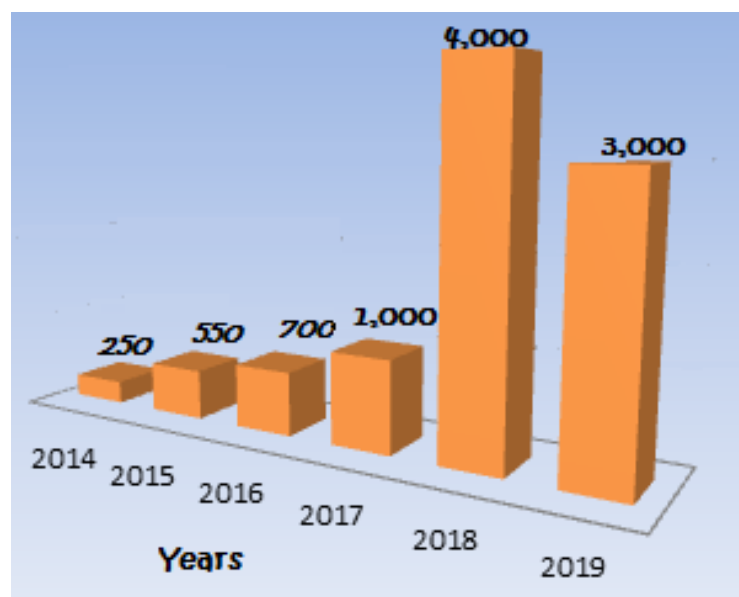
One lab scientist from MNH is currently engaged in a full-time masters course in Histopathology at MUHAS – He has an MoU with TLM to partly work for the children with cancer during his studies.

We have engaged an NGO – True Anchor whose focus is exclusively on capacity building to determine gaps in capabilities of Tumaini La Maisha Tanzania. We believe we will be with them until all areas of the organization have been looked into and strengthened to make us a stronger organization.



# FUNDRAISING & INCOME

## FUNDRAISING AND INCOME



**Diagram 2: Donor Contribution growth over the years in millions**

. As indicated in the diagram above, this figure has reduced compared to 2018 as our major ICU and water plant construction programmes were completed on time and within budget.

Yet again this year our longtime supporter and friend HLB MEKONSULT, Certified Public Accountants offered their services to audit our books free of charge. We are eternally grateful to Mr Msuri for is constant support in this endeavor.

## Income Sources for the year 2019

Income sources this period came from different groups including: grants from non- profit organizations, corporate businesses, individual donations, TLM special events and donated professional services and other gifts in kind. More than 80% grants came from non Profit organizations and the least being from Income Generating activities, see Diagram 4.

TLM expenses are grouped into 6 major categories: Clinical and non-clinical programmes, training and twinning programmes, Projects and admin expenses. The majority of our funds go to running the projects and programmes, with the least being in admin expenses.

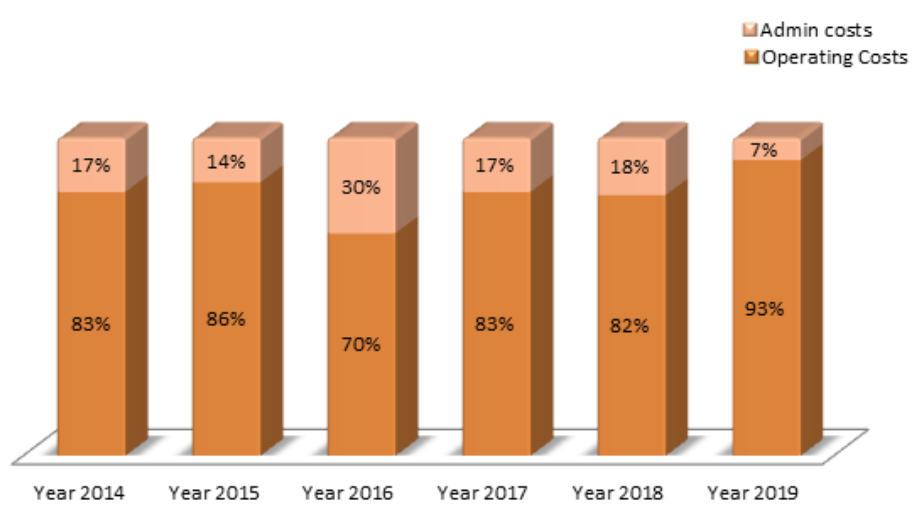


It has been a very exciting financial year with lots of organizational growth in both our experience and financial base.

Our financial goal is to serve as many children possible with the available resources at the lowest possible costs and the highest possible quality. We aim to be financially sound to manage the challenges of today and to continue serving the children of tomorrow. These are the questions that are always at the forefront of our minds each day working towards our goal.

This year we were privileged to receive from donors and partners a total amount of grants and donations of Tshs. 3,048,578,434/-

## Efficiency Indicators



Efficiency indicators shows out of the grants received during the period what was directly allocated to Children with cancer and their families in terms of services and support. For the year 2019 TLM efficiency indicator was at 93%. This serves to indicate that TLM managed to use less than 7% of the total

**Diagram 3: Efficiency indicators over the years**

grant received on administration costs, while the majority of funds went directly to strengthening the vital services TLM are providing and developing. This is a significant improvement on our previous efficiency indicators since 2014 which ranged from 70% (in 2016) to 86% (in 2015).

## Support Service Indicator

The costs involved in the treatment of childhood cancer vary a lot depending on the diagnosis. TLM contribution to treatment costs and care per child on average is approximately Tshs. 655,185 per year. By looking back in the years we see a heartening trend: in 2013 we had only 203 new cases that were supported by the project and in this year 2019, the number of new childhood cancer cases for children has increased to 726. Thus over the years we have seen gradual increase of the number of children who are diagnosed with cancer and received treatment with the support of TLM. See Diagram 6.



## TLM Income

### Income

Non-profit Organization Grants	2,880,897,386
Corporate / Business Grants	25,314,313
Individual	48,043,368
Income Generating Activity	3,100,000
Special Event	36,565,650
Donated Professional Services & services	42,672,400
Gain / Loss in Forex	4,486,488
Interest-Savings, Short-term Fixed Deposit	7,498,829
	<b>3,048,578,434</b>

### Revenue



### Expenses

Clinical Care Programme	810,902,502
Non-Clinical Care Programme	286,383,834
Training and Twinning Programme	104,245,003
Projects	1,621,961,282
Admin Expenses	221,218,213
	<b>3,044,710,834</b>

### Expenses



**Diagram 4: Income & Expense 2019**

The financial statements for the year ended 30th December 2019 were authorized for issue by Mr. Gerald Mongela, Board Chair on 30<sup>th</sup> July 2020. The financial statements have been prepared on a historical cost basis with the exception of certain assets, which are stated at market value as outlined in the accounting policies. The financial statements are shown in Tanzanian shillings. For more information about TLM Audit report for the year 2019 please visit our website at [www.wearetlm.org](http://www.wearetlm.org)



### Statement of Financial Position 2019

Diagram 5 show TLM's financial position for the year 2019. Since there are no shareholders and no equity share capital in Non-for-profit organizations, the net asset in this report indicates the total number of donated funds that we have received from donors in the year 2010 and 2019.

### Statement of Financial Position 2019

<b>STATEMENT OF INCOME AND EXPENDITURE FOR THE YEAR ENDED</b>		
<b>31 DECEMBER 2019</b>		
	<b>2019</b>	<b>2018</b>
	<b>TZS</b>	<b>TZS</b>
<b>INCOME</b>		
Restricted Funds	2,893,099,081	2,991,893,017
Unrestricted Funds	100,821,636	352,471,566
Donated Goods and Services	42,712,400	178,370,509
Other Income	11,985,317	25,127,343
	<b>3,048,618,434</b>	<b>3,547,862,435</b>
<b>EXPENDITURE</b>		
Clinical Care Programme	810,902,502	652,080,126
Non-Clinical Care Programme	286,915,334	258,141,734
Training and Twinning Programme	107,621,103	66,485,662
Projects	1,621,961,282	2,407,425,303
Administration Expenses	221,218,213	163,729,611
	<b>3,048,618,434</b>	<b>3,547,862,435</b>
<b>Surplus/Deficit</b>		<b>-</b>
<b>STATEMENT OF FINANCIAL POSITION AS AT 31 DECEMBER 2019</b>		
	<b>2019</b>	<b>2018</b>
	<b>TZS</b>	<b>TZS</b>
<b>Assets</b>		
<b>Non-current Assets</b>		
Property and Equipment	276,342,914	279,928,891
<b>Current Assets</b>		
Inventory	174,368,780	156,214,465
Receivables	535,255,151	2,196,193,704
Cash and cash equivalents	253,670,932	1,309,034,351
	<b>963,294,863</b>	<b>3,661,442,520</b>
<b>Total Assets</b>	<b>1,239,637,777</b>	<b>3,941,371,411</b>
<b>Liabilities and Reserve</b>		
<b>Liabilities</b>		
Payables and accruals	158,044,395	902,106,332
Deferred Grant	1,081,593,382	3,039,265,079
<b>Total Liabilities</b>	<b>1,239,637,777</b>	<b>3,941,371,411</b>
<b>NET ASSETS</b>	<b>-</b>	<b>-</b>
<b>Financed by:</b>		
Fund Balance at the year end	<b>-</b>	<b>-</b>

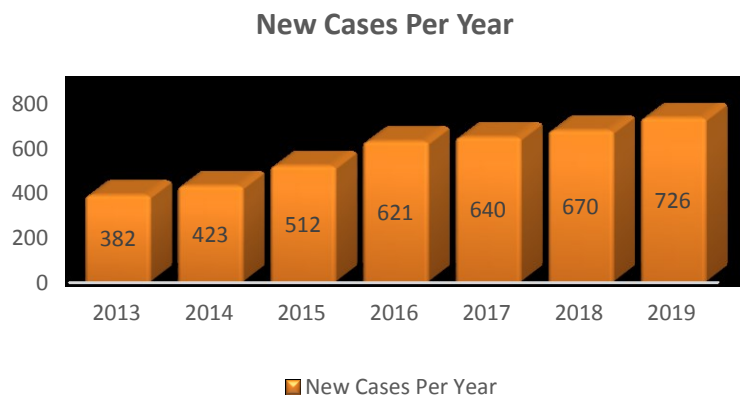
Diagram 5: Statement of Financial Position





# **2019 IN NUMBERS**

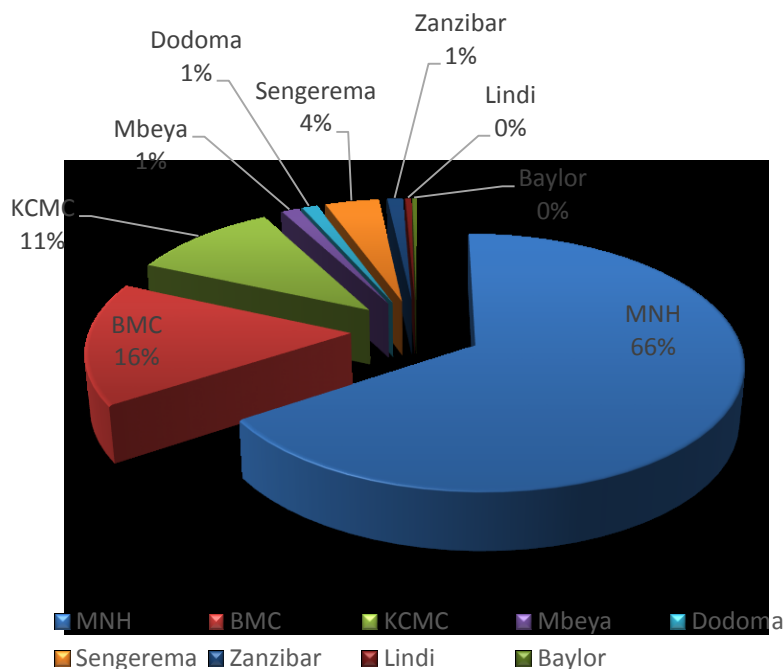
## NEW PAEDITRIC CANCER CASES SEEN



**Diagram 6: New Cases over the Years 2013-2019**

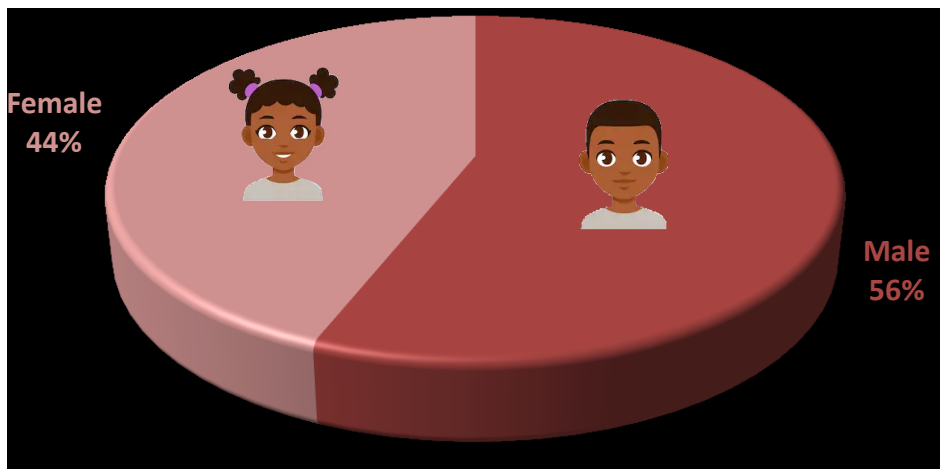
Childhood cancer cases have continued to increase gradually over the years, the year 2019 we have seen a total of 726 new cases, which is a significant increase from 670 new cases in 2018.

From 2013 to date the number of new cases have doubled, from 382 new children cancer cases seen at the hospital to over 700 in the year 2019.



**Diagram 7: New Cases seen at partner centers**

Muhimbili National Hospital which is the hub of our operation, saw the most number of new cases followed by Bugando Hospital and KCMC. The other newer centers seeing the least number of new childhood cancer cases, but we expect in the coming years with more awareness creation in the new regions we will be seeing more numbers.

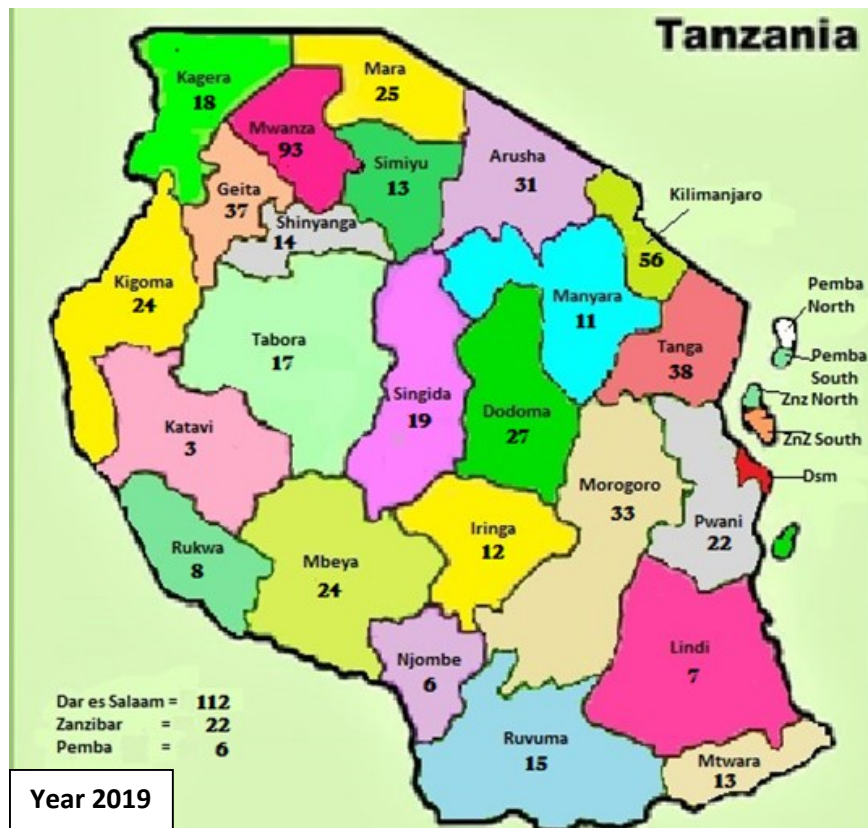


**Diagram 8: New Cases by sex distribution**

The number of new cases in terms of sex as a percentage was as follows: males: 56%; females: 44%. In comparison in 2018, the percentage of girls was 48%, thus this year there has been a 4% swing. For a more detailed breakdown by sex between the centers please see Diagram 12.



Diagram 9: Patients seen from different Region over the Years 2017-2019



In the year 2019, we have continued to receive new cases of childhood cancer from all over the country, with the majority of cases coming from where our partner centers are located. The Hub which is Muhimbili National hospital continues seeing the highest number of new cases as it is where all the referral cases from all over the country are sent to as well as it being the national Hospital.

Compared to previous years all regions have seen significant increase in the number of cases. For example in Tabora in year 2017 there were 9 cases, 2018, 10 cases this year up to 17 new cases.

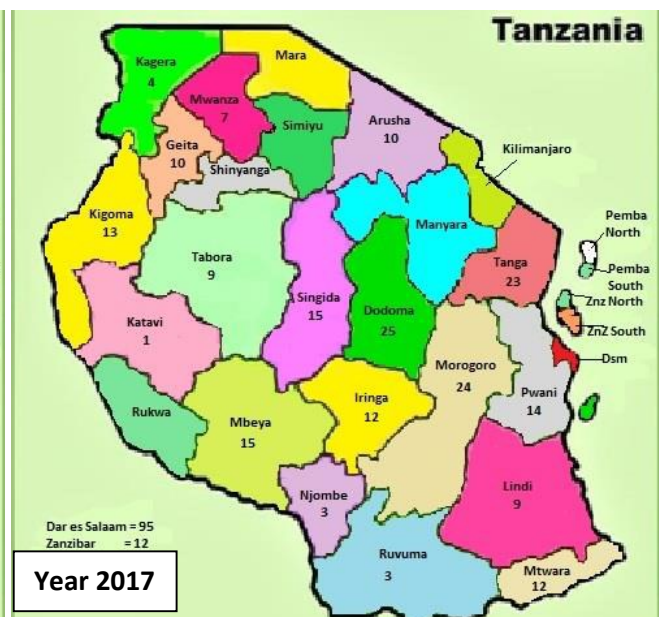
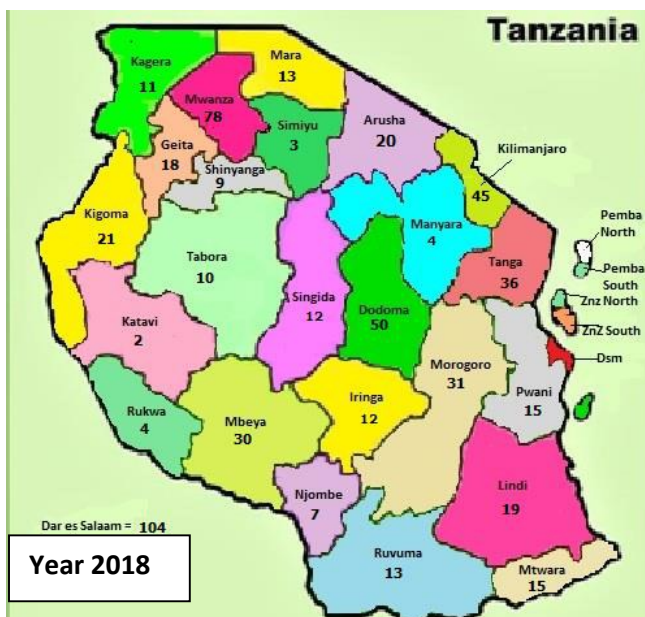
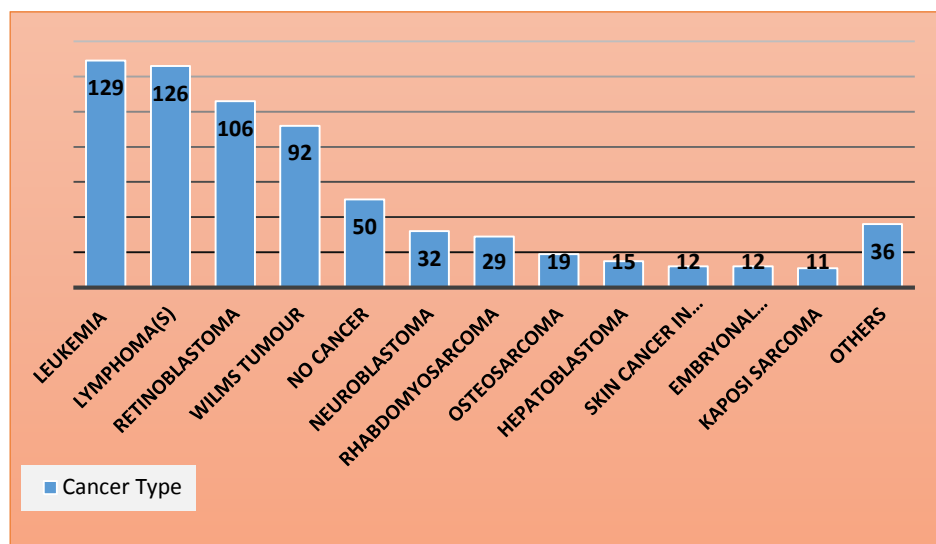


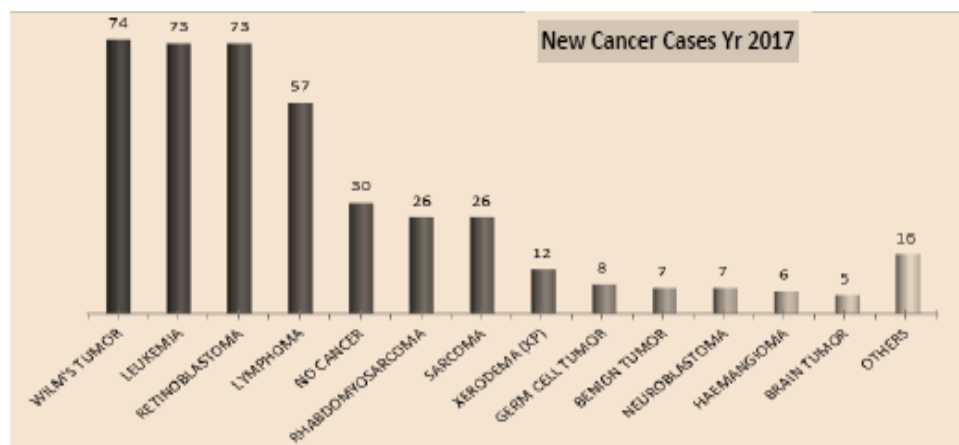
Diagram 10: New Cases by Cancer diagnosis type over the years

2019

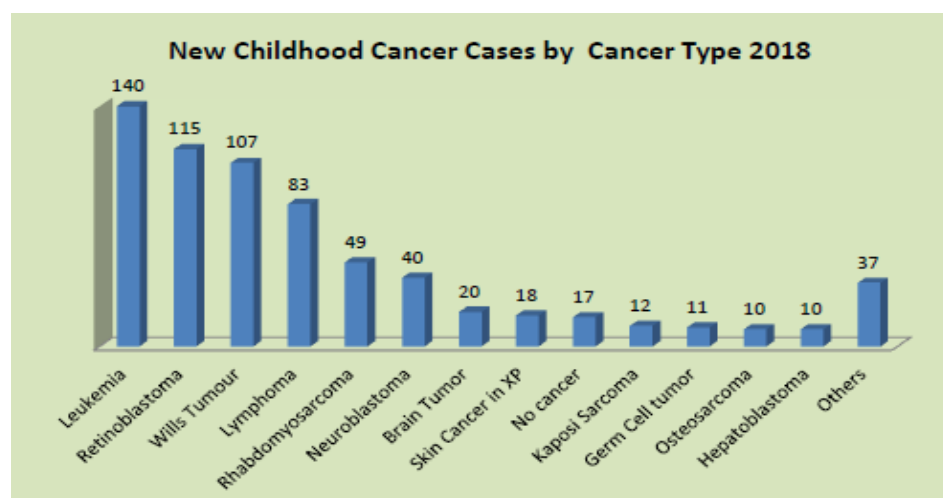


The year 2019, Leukemia leads with the highest number of children presented with this type of cancer.

Leukemia, Lymphoma Retinoblastoma and Wilms Tumor continue being the leading type of childhood cancer over the years.

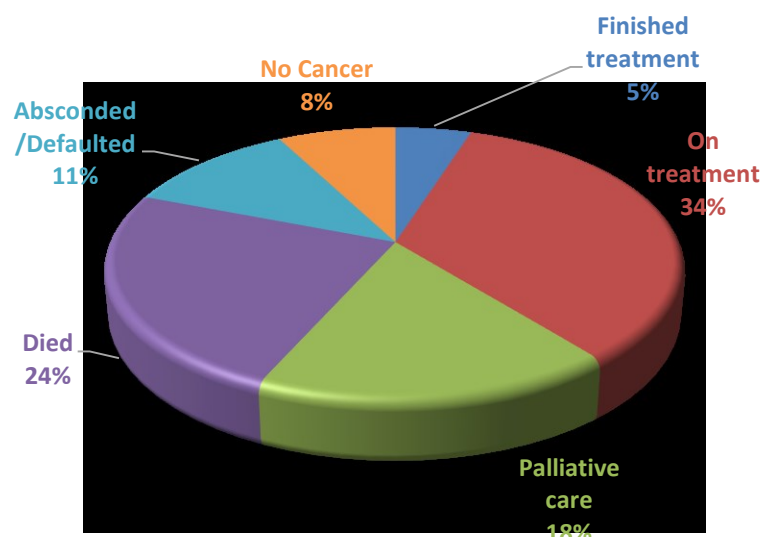


The last number of cases seen for type of childhood cancer are Adenocarcinoma, Non-Hodgkin Lymphoma and Squamous cell carcinoma. Please see Diagram 13 for more detail.





**Diagram 11: New Cancer Cases by treatment outcome**



The total number of new cases who received treatment was 726. Of these 65% were alive at the end of 2019. 39% have finished treatment or are in complete remission on treatment at end of the year 2019.

As shown in diagram 11: 24 % passed away with 18% on palliative care. While 8% had no cancer after being tested and 11% of cases defaulted from treatment.

**Diagram 12: Outreach Centers by patient numbers**

OUTREACH CENTERS SUMMARY 2019				
REGION	NAME OF CENTER	No of New Cases	Male	Female
Dar es Salaam	Muhimbili National Hospital	482	264	218
Mwanza	Bugando Medical Center	16	59	57
Arusha & Moshi	Kilimanjaro Christian Medical Centre & Arusha Medical center	77	50	23
Mwanza	Sengerema Hospital	23	13	10
Mbeya	Mbeya Regional Hospital & Baylor Group	9	6	3
Dodoma	Dodoma University Hospital	8	8	0
Zanzibar	Mnazi Mmoja Hospital	8	4	4
Lindi	Lindi Regional Hospital	3	2	1
TOTAL		726	406	316

Muhimbili National Hospital, which is the hub of all childhood cancer treatment continued seeing the most number of new cases followed by KCMC and Sengerema Hospital and Bugando Medical center in Mwanza. The least number being from Lindi Regional Hospital because it is a new center that has just joined the network



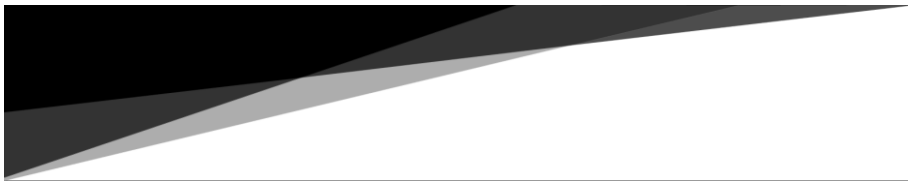
**Diagram 13: New Cancer Cases by diagnosis type**

New Cases seen 2019 (Type of Cancer)									TOTAL
	MNH	DODOMA	BMC	SENGEREMA	MBEYA	MNAZI	KCMC	LINDI	
Adenocarcinoma	1	0	1	1	0	0	0	0	3
Brain Tumor	6	0	2	0	0	0	2	0	10
Germ Cell tumor	6	0	4	0	0	0	0	0	10
Burkitt Lymphoma	26	0	22	4	0	0	2	0	54
Lymphoma	24	2	4	0	1	1	1	0	33
Non-Hodgkin lymphoma (NHL)	2	0	0	0	0	0	0	0	2
Hodgkin Lymphoma (HL)	15	1	12	0	0	0	9	0	37
Erwings Sarcoma	3	0	0	0	0	0	0	0	3
Kaposi Sarcoma	3	0	4	0	4	0	0	0	11
Osteosarcoma	13	0	0	0	0	1	5	0	19
Rhabdomyosarcoma	13	1	1	1	1	0	4	0	21
Embryonal Rhamdomyosarcoma	8	0	2	0	0	0	2	0	12
Alveolar rhabdomyosarcoma	3	0	1	0	1	0	0	0	5
Sarcomas	5	0	1	0	1	1	0	0	8
Hepatoblastoma	10	0	3	0	0	0	2	0	15
Neuroblastoma	23	0	1	1	0	2	5	0	32
Retinoblastoma	76	1	9	0	0	0	20	0	106
Wills Tumour	59	2	19	0	1	2	9	0	92
Sacroccygeal terratoma	9	0	0	0	0	0	0	0	9
Squamous cell carcinoma	2	0	0	0	0	0	0	0	2
Leukemia	2	0	2	2	0	0	0	0	6
Acute Lymphocytic Leukemia (ALL)	94	1	7	2	1	0	2	0	107
Acute Myeloid Leukemia (AML)	4	0	5	0	1	1	2	0	13
Chronic myelogenous leukemia	3	0	0	0	0	0	0	0	3
Nasopharyngeal carcinoma	5	0	2	0	0	0	0	0	7
Skin Cancer in Xeroderma (XP)	11	0	0	0	0	0	1	0	12
Others	19	1	3	5	0	0	5	3	36
No cancer	35	0	2	7	0	0	6	0	50
No diagnosis	2	0	9	0	0	0	0	0	11
<b>TOTAL</b>	<b>482</b>	<b>9</b>	<b>116</b>	<b>23</b>	<b>11</b>	<b>8</b>	<b>77</b>	<b>3</b>	<b>729</b>

Diagram 14: New Cancer Case seen over the years by zones & Location

Location	Zone	NEW CASES SEEN PER YEAR				Total in Zones
		2016	2017	2018	2019	
Dodoma	Central	24	25	50	27	186
Singida	Central	14	15	12	19	
Pemba	Coastal	3	5	10	6	83
Zanzibar	Coastal	10	12	15	22	
Dar es Salaam	Eastern	74	95	104	112	588
Morogoro	Eastern	39	24	31	33	
Pwani	Eastern	25	14	15	22	
Geita	Lake	7	10	18	37	351
Kagera	Lake	4	4	11	18	
Mara	Lake	6	0	13	25	
Mwanza	Lake	20	7	78	93	
Arusha	Northern	27	10	20	31	374
Kilimanjaro	Northern	10	0	45	56	
Manyara	Northern	9	0	4	11	
Simiyu	Northern	1	0	3	13	
Tanga	Northern	37	23	36	38	
Lindi	Southern	6	9	19	7	137
Mtwara	Southern	14	12	15	13	
Ruvuma	Southern	11	3	13	15	
Rukwa	Southern highlands	7	0	4	8	170
Iringa	Southern highlands	12	12	12	12	
Mbeya	Southern highlands	8	15	30	24	
Njombe	Southern highlands	10	3	7	6	
Katavi	Western	6	1	2	3	155
Kigoma	Western	7	13	21	24	
Shinyanga	Western	5	0	9	14	
Tabora	Western	14	9	10	17	

# PARTNERS & FRIENDS



We are fortunate to have had many wonderful partners over the years. Some of the partners like the MoDewji Foundation, Irish Embassy, Rotary and Lions clubs of Dar es Salaam, Electric Aid the Kenneally Foundation are our long-term supporters.

They have supported TLM for many years, during which time partners and supporters have raised Tanzanian shillings 3,036,633,114 for the organization. The money, Goods in kind (GIK), and services raised by the partners have funded many important projects and programmes for the children and families supported by the TLM. These include running of the Ujasiri Hostel, stocking of the welcome park package. Please visit our website more a more detailed list of all our supporters over the years. [www.wearetlm.org](http://www.wearetlm.org)

# TLM Engine

## Highlight on our Board Members

### Mr. Gerald Mongella & Dr. Blandina Lugendo

Mr. Gerald Mongella, a father, a leader and advocate for the children., he has been there from from the beginning of TLM Tanzania and supports each and everything we do. He is 100% dedicated tp giving all he has: his time, compassion and leadership to the whole organization. Nothing is impossible to him, with his incredible drive and will power.

Dr Blandina Lugendo is a wonderful Mother to four Beautiful daughters – Vicky our Cancer warrior who sadly received her angel wings, will always be in our hearts and never forgotten. Blandina is also a founding Board member of Tumaini la Maisha Tanzania. a Marine Ecologist by profession and works as a Lecturer at the University of Dar es salaam. She is dedicated. She inspires professionalism and greatness. She is a wealth of knowledge and above all she is kind and full of compassion.

